

# Jaipur

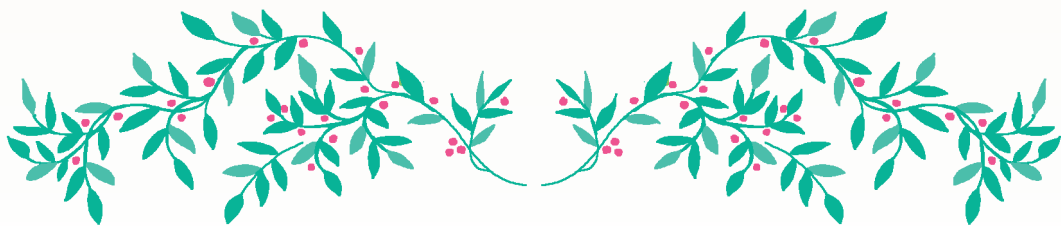


Free  
Download

Quilt by Lynne Goldsworthy of @lilysquilts  
Finished Quilt Size 1.80m x 1.80m (70" x 70")

Intermediate to skilled level.

Knowledge of paper piecing technique essential



makower uk



[www.makoweruk.com](http://www.makoweruk.com)



[contact@makoweruk.com](mailto:contact@makoweruk.com)



+44(0)1628 509640

Unit 14, Cordwallis Business Park, Clivemont Road, Maidenhead, Berkshire SL6 7BU



# JAIPUR QUILT

70" sq (1.8m sq)

Intermediate to skilled level. Knowledge of paper piecing technique essential

SKU	Requirement	Cut
<b>2560Q</b> <i>Side Blocks Corners and Motifs</i>	1 m / 1yd (to allow for fussy cutting motifs)	*Eight 6 ½" squares (F) and sixteen 5 ½" x 6" rectangles (G)
<b>2560T</b> <i>Backing</i>	4 m / 4 ½ yds	Cut into two equal lengths
<b>2561Q</b> <i>Centre Panel Inner Ring</i>	1 m / 1yd	One 18" WOF strip cut into two 18" squares (D1,2,3) Three 4" WOF strips cut into twenty 3 ½" x 4" and eight 2 ½" x 4" rectangles (A1,2)
<b>2561T</b> <i>Outer Border</i>	80cm / ⅞ yd	Seven 4 ½" WOF strips sewn end to end and cut into two 62 ½" and two 70 ½" lengths
<b>2562P</b> <i>Centre Panel Outer Ring</i>	50 cms / ½ yd (to allow for fussy cutting motifs)	Twelve 4 ½" squares* <b>NB</b> these pieces are used to FPP template C so you may wish to trial the fussy cutting on one piece before cutting them all to ensure you have the elephants centred and upright on the C border (see step 20).
<b>2562T</b> <i>Dresden Plate</i>	FQ (*fussy cut)	Six Dresden Plate templates*
<b>2563P</b> <i>Centre Panel Outer Ring, Side Block Flying Geese</i>	70cm / ¾ yd	Two 4 ½" WOF strips cut into eight 4 ½" squares and eight 3" x 4 ½" rectangles (C1,2,3) Five 3" WOF strips cut into ninety-six 2" x 3" rectangles (E)
<b>2563Q</b> <i>Centre Panel circles</i>	F8th	Two 2 ½" WOFQ strips cut into sixteen 2 ½" squares
<b>2563T</b> <i>Centre Panel Wedge Ring</i>	FQ	Three 4" WOFQ strips cut into twenty-four 2 ½" x 4" rectangles
<b>2564L</b> <i>Side Blocks Flying Geese</i>	50cm / ⅝ yd	Five 3" WOF strips cut into ninety-six 2" x 3" rectangles (E)
<b>2564L or 2566L</b> <i>Binding</i>	60cm / 24"	Seven 2 ½" WOF strips
<b>2564T</b> <i>Centre Panel Wedge Ring, Dresden Plate</i>	FQ	Three 4" WOFQ strips cut into twenty-four 2 ½" x 4" rectangles (B1,2) 3 ¾" WOFQ strip (Dresden Plate template)
<b>2565/1</b> <i>Side Panel Blocks</i>	Panel	See cutting instructions
<b>2566L</b> <i>Sashings, Centre Panel Outer Ring, Side Block Flying Geese</i>	2 ½ m / 2 ¾ yd	Three 2 ½" WOF strips cut into twelve 2 ½" x 10 ½" strips. Eleven 2 ½" WOF strips sewn end to end and cut into two 34 ½", four 58 ½" and two 62 ½" lengths. One 16 ½" WOF strip cut into one 16 ½" square. Cut the remainder into sixteen 1" WOF strips to be cut into thirty-two 10 ½" lengths if needed (see step 2). Three 4 ½" WOF strips cut into twenty-four 4 ½" squares. Twelve 1 ½" WOF strips cut into one hundred and ninety-two 1 ½" x 2 ½" rectangles.
<b>2566P</b> <i>Centre Panel Inner Ring, Dresden Plate Centre</i>	20cm / ¼ yd	One 5" WOF strip cut into one 5" square and twelve 3" x 4" rectangles One 4" WOF strip cut into twelve 3" x 4" rectangles
<b>2566Q</b> <i>Side Blocks Flying Geese</i>	60cms / 24"	Twelve 1 ½" WOF strips cut into one hundred and ninety-two 1 ½" x 2 ½" rectangles
Wadding 279 Cotton Mix 80:20 from <a href="http://www.vlieseline.com/en/">http://www.vlieseline.com/en/</a>		2m sq / 78" sq
Bondaweb (optional) from <a href="http://www.vlieseline.com/en/">http://www.vlieseline.com/en/</a>		1m / 1yd
Thread from <a href="http://www.aurifil.com">http://www.aurifil.com</a>		Aurifil 50wt for piecing and 40wt for quilting

Templates	One circle and wedge template set Four each of: A1, A2, B1, B2, B3, C1, C2, C3 One each of D1, D2, D3, F and G Thirty-two E templates
-----------	--

\*You may choose to fussy cut these pieces

**Notes:**

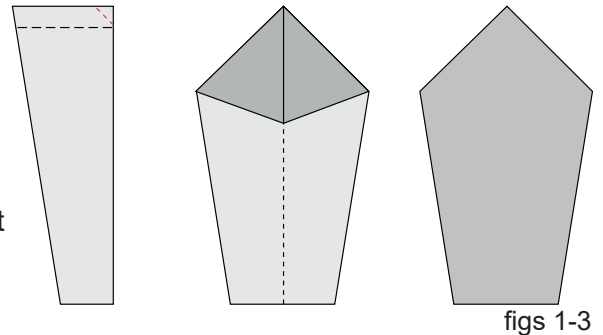
- Make sure to visit <http://www.makoweruk.com/projects/> to ensure you are working from the most up-to-date version of the pattern.
- Makower UK provides the written instructions only to accompany the named collection. Retailers are free to use these free instructions to provide a fabric kit. Accurate cutting of fabric is down to the individual retailer and any fabric supply enquires should be directed to point of purchase.
- Read the pattern in full before starting.
- ¼” seams are used throughout except where stated otherwise
- Press after each seam, pressing seams open or to one side as preferred.
- **WOF** - width of fabric - a strip of fabric cut from selvedge to selvedge.
- **WOFQ** - width of fat quarter - a strip of fabric cut from selvedge to centre cut from a FQ
- This pattern uses foundation paper piecing (**FPP**). You can find a useful tutorial here if you are not familiar with this technique: <https://www.gathered.how/sewing-and-quilting/quilting/how-to-foundation-paper-piece-patchwork/>

**Border Panel Blocks**

1. Cut the eight squares from the panel so they measure 10 ½” square, keeping the design in the centre.

**Dresden Plate**

2. Use the Dresden template to cut six wedges from the two Dresden prints (green scallops and green elephants). You may wish to fussy cut the green elephants.
3. Fold these wedges in half right sides together and finger press the fold, sew a ¼” seam along the top, trim corner (optional step), turn right side out and press to a point aligning the point with the finger pressed crease (figs 1-3).
4. Sew into a circle, alternating prints.



**Centre Panel Circle**

5. Fold the 16 ½” square in half and in half again.
6. Tape together the two pieces of the large circle quarter template at the red lines and cut out a circle by aligning the blue lines on the template with the folds of the fabric.
7. Mark the red dots using an erasable marker or cutting small (1/8”) snips into the seam allowance. You may wish to mark the blue dots using an erasable marker to help with placement of the small circles at step 12 below.
8. Baste, then sew the Dresden plate to the centre of the fabric circle. Sew in place by hand or machine.
9. Trace one medium circle and sixteen small circles onto the back of the Bondaweb. Cut out roughly – press the medium one to the back of the bright pink metallic texture fabric and the small ones onto the back of the white floral print. Cut out.
10. Fuse the medium circle to the centre of the Dresden Plate and the small circles around the outside of the Dresden Plate – the large circle template has blue dots on it to indicate the placement of the circles. Sew around the outside of these circles using a blanket, zigzag/satin or other decorative stitch.

**Inner Triangle Paper-pieced Ring**

11. Tape four **A1** templates to four **A2** templates to make the four FPP **A** templates for the first border. Foundation paper piece these templates using the bright pink metallic texture 3” x 4” rectangles for sections 2, 4, 6, 8, 10 and 12, the cream mandala fabric 2 ½” x 4” rectangles for sections 1 and 13 and the cream mandala print 3 ½” x 4” rectangles on sections 3, 5, 7, 9, and 11 on the **A** templates.
12. Trim to the dashed lines, remove the papers from the back and sew the four arcs together to form one big circle. Pin then sew this to the centre circle, matching the cream mandala triangle points to the marked red dots on the centre circle.

### Wedge Paper-pieced Ring

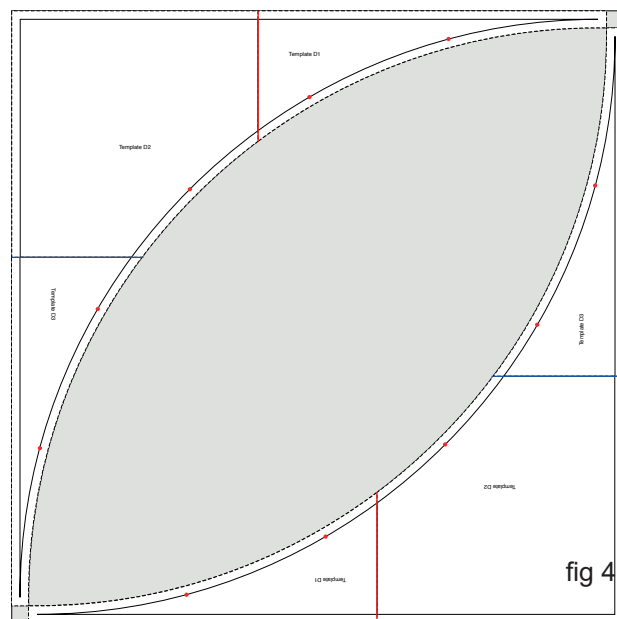
13. Tape together four sets of the **B1-3** templates, joining them at the blue and red lines to make four **B** templates.
14. Foundation paper piece these using the green florals on the odd numbered and the green scallops on the even numbered sections of the templates.
15. Trim to the dashed lines, remove papers from the back and sew the four arcs together to form one big circle. Pin then sew this to the centre circle, matching the bright pink triangle points to the centres of the green floral sections.

### Outer Triangle Paper-pieced Ring

16. Tape together four sets of the **C1-3** templates, joining them at the blue and red lines to make four **C** templates.
17. Foundation paper piece these using the pink floral 3" x 4 1/2" rectangles on sections 1 and 13, the pink floral 4 1/2" squares on sections 5 and 9, the pink elephants 4 1/2" squares on sections 3, 7 and 11 and the dark fabric 4 1/2" squares on all the even numbered sections.
18. Trim to the dashed lines, remove papers from the back and sew the four arcs together to form one big circle. Pin then sew this to the centre circle, matching the dark fabric triangle points to the centres of the green floral sections in the previous circle.

### Centre Panel Corners

19. Tape together templates **D1,2,3** at the red and blue lines to make one **D** template. Use this as shown in fig 4 to cut two frame pieces from each of the cream mandala 18" squares. Mark the red dots using an erasable marker or cutting small (1/8") snips into the seam allowance.
20. Sew these into one large frame, pin and then sew to the centre circle, matching the pink floral and elephant triangle points to the marked red dots on the frame piece.



### Side Blocks

#### Flying geese Paper-pieced Rings

- Foundation paper piece eight sets of four **E templates** using:
  - The cream metallic 1 1/2" x 2 1/2" rectangles in sections 3, 6, 9, 12, 15 and 18
  - The dark fabric 1 1/2" x 2 1/2" rectangles in sections 2, 5, 8, 11, 14 and 17
  - The pink floral and the pink scallops 2" x 3" rectangles in sections 1, 4, 7, 10, 13 and 16(NB. You will make four sets of four with the pink scallops and four sets of four with the pink florals).

21. Sew the four arcs of each circle together. You now have a choice as to whether you raw-edge applique the centre circles (as you did for the small and medium circles at steps 8 and 9) or piece them. Either way you will use **template F**.

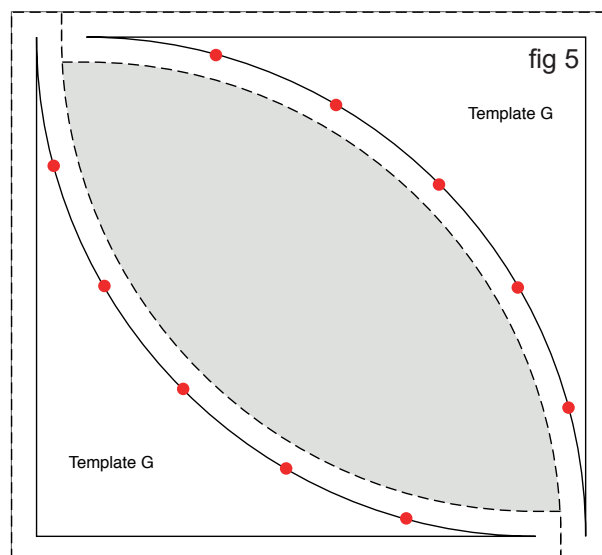
### Motif Circles

22. For traditional piecing, fussy cut the circles from the cream scenic fabric using the black dashed line on **template F** as your guide and marking the red dots as you did with previous templates.
23. Pin and sew these circles to the flying geese **template E** circles matching the marked red dots to the points of the flying geese.
24. For raw-edge applique, use the solid black line as a guide for tracing then cutting out the circles and you don't need to worry about marking the red dots. The red dashed line is an optional template to cut a piece of fabric to stick to the back of the centre square as it will have fusible web on the centre with nothing to stick to except your ironing board – an old scrap of white or cream fabric would work well for this.



### Side Block Corners

25. Use **template G** to cut out two frame pieces from each of the cream scenic  $5\frac{1}{2}$ " x 6" rectangles as shown in fig 5.
26. Sew each set of four of these into one large frame, pin and then sew to the flying geese, matching the flying geese points to the marked red dots on the frame pieces.



### ASSEMBLING THE QUILT

**Sashing** - The strips listed below are all cut from the magenta Metallic Linen Texture

27. Following the layout in the main quilt image, sew the panel squares and the flying geese squares into:
  - Two columns (left and right sides of the quilt) each containing two flying geese squares and one panel square and two  $2\frac{1}{2}$ " x  $10\frac{1}{2}$ " strips.
  - Two rows (top and bottom of the quilt) each containing three panel squares, two flying geese squares and four  $2\frac{1}{2}$ " x  $10\frac{1}{2}$ " strips.
28. Sew  $2\frac{1}{2}$ " x  $34\frac{1}{2}$ " strips to either side of the centre panel and then the two columns pieced at step 27 above to those.
29. Sew  $2\frac{1}{2}$ " x  $58\frac{1}{2}$ " strips to the top and bottom of the centre panel and then the two rows pieced at step 27 above to those.
30. Sash the sides of the quilt top with the dark  $2\frac{1}{2}$ " x  $58\frac{1}{2}$ " strips then the top and bottom with the  $2\frac{1}{2}$ " x  $62\frac{1}{2}$ " strips.

### Outer Border

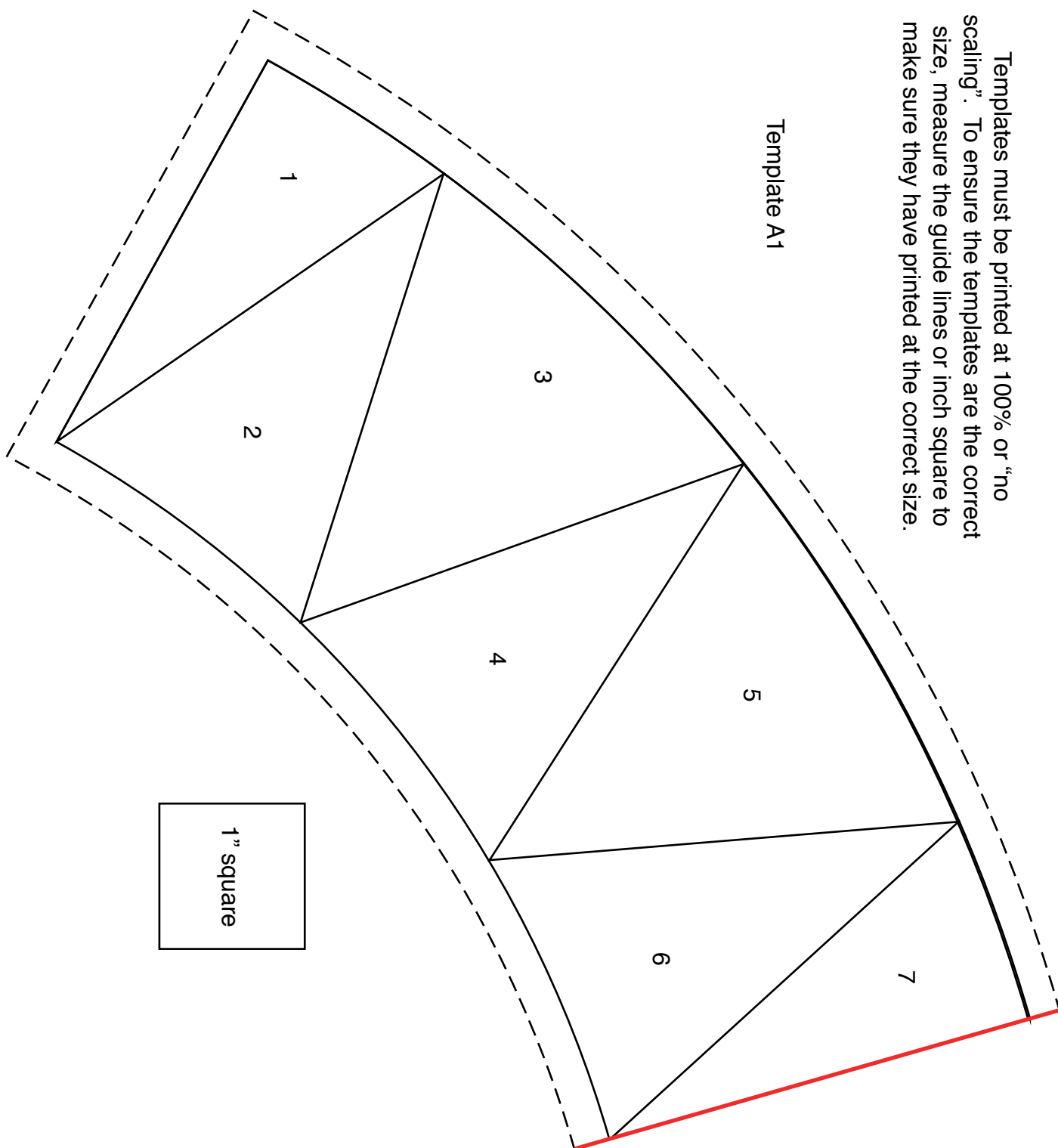
31. Add the shorter  $4\frac{1}{2}$ " wide teal mandala fabric borders to the sides of the quilt, then add the longer borders to the top and bottom.

### Finishing the quilt

32. Sew the binding strips end to end using diagonal seams.
33. Press wrong sides together along the length to make a double fold binding.
34. Make a quilt sandwich, basting together the back, the wadding, and the top.
35. Quilt as desired then trim square, removing excess wadding and backing.
36. Bind, taking care to mitre the corners.

Templates must be printed at 100% or "no scaling". To ensure the templates are the correct size, measure the guide lines or inch square to make sure they have printed at the correct size.

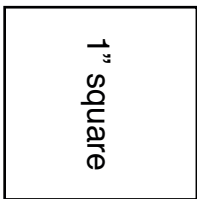
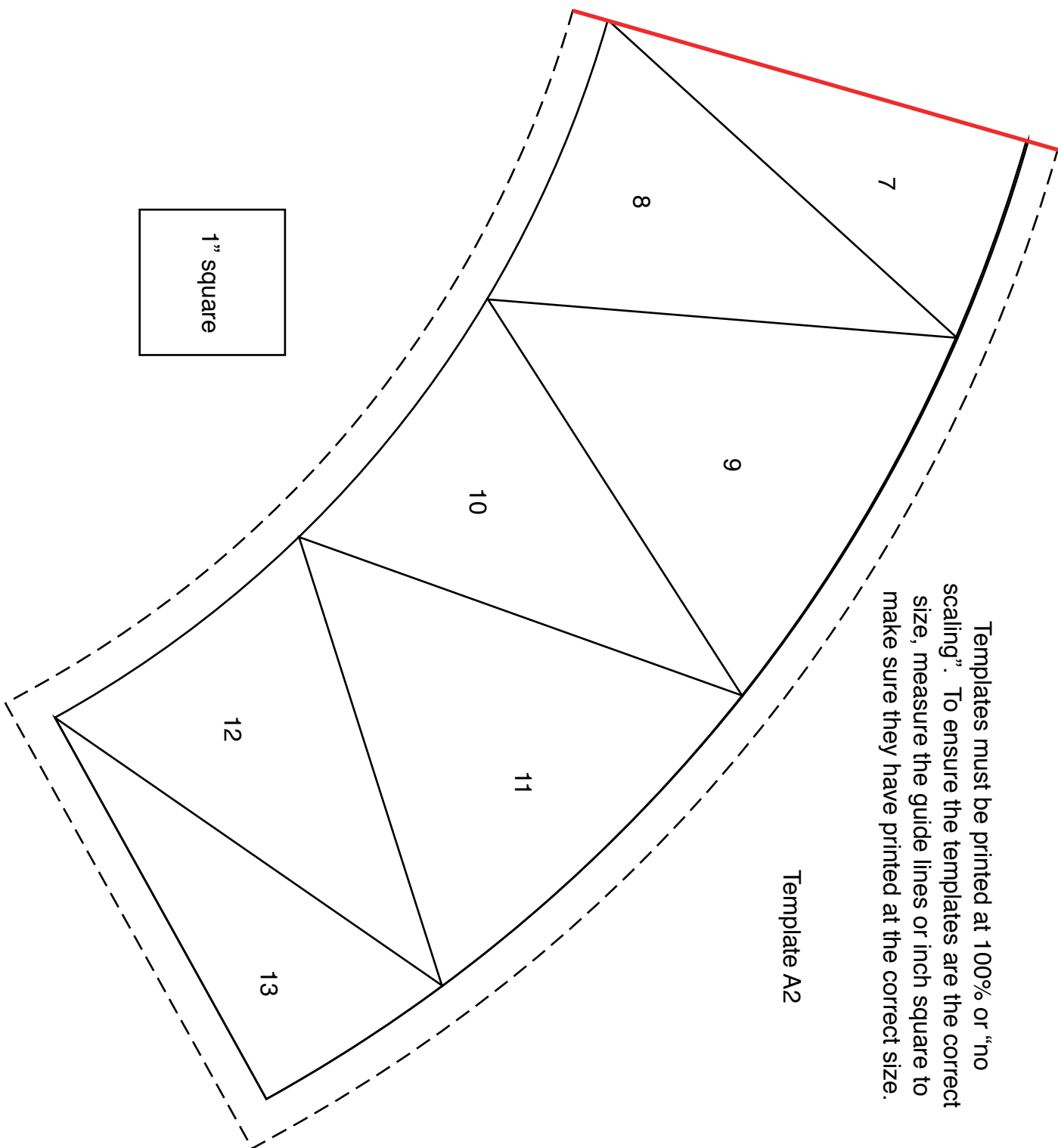
Template A1

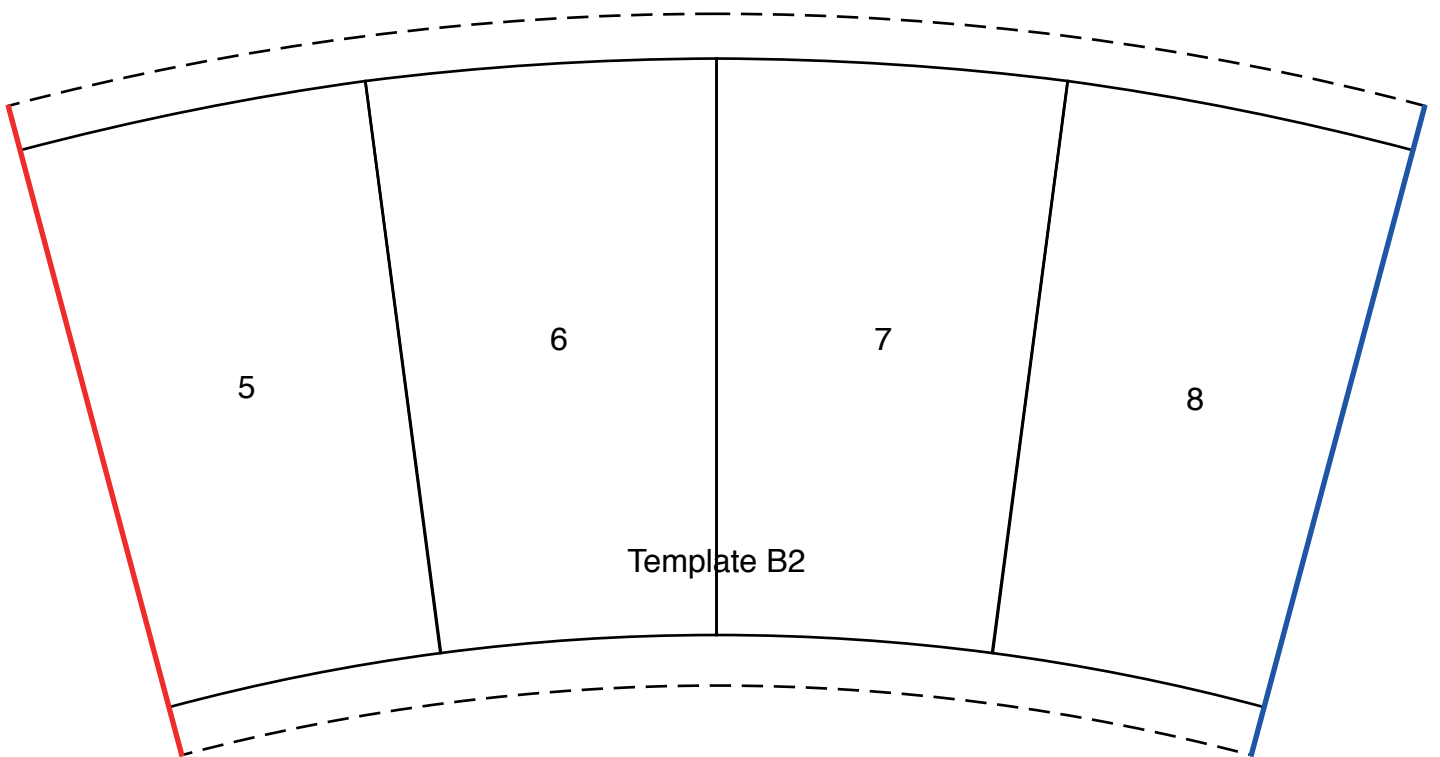
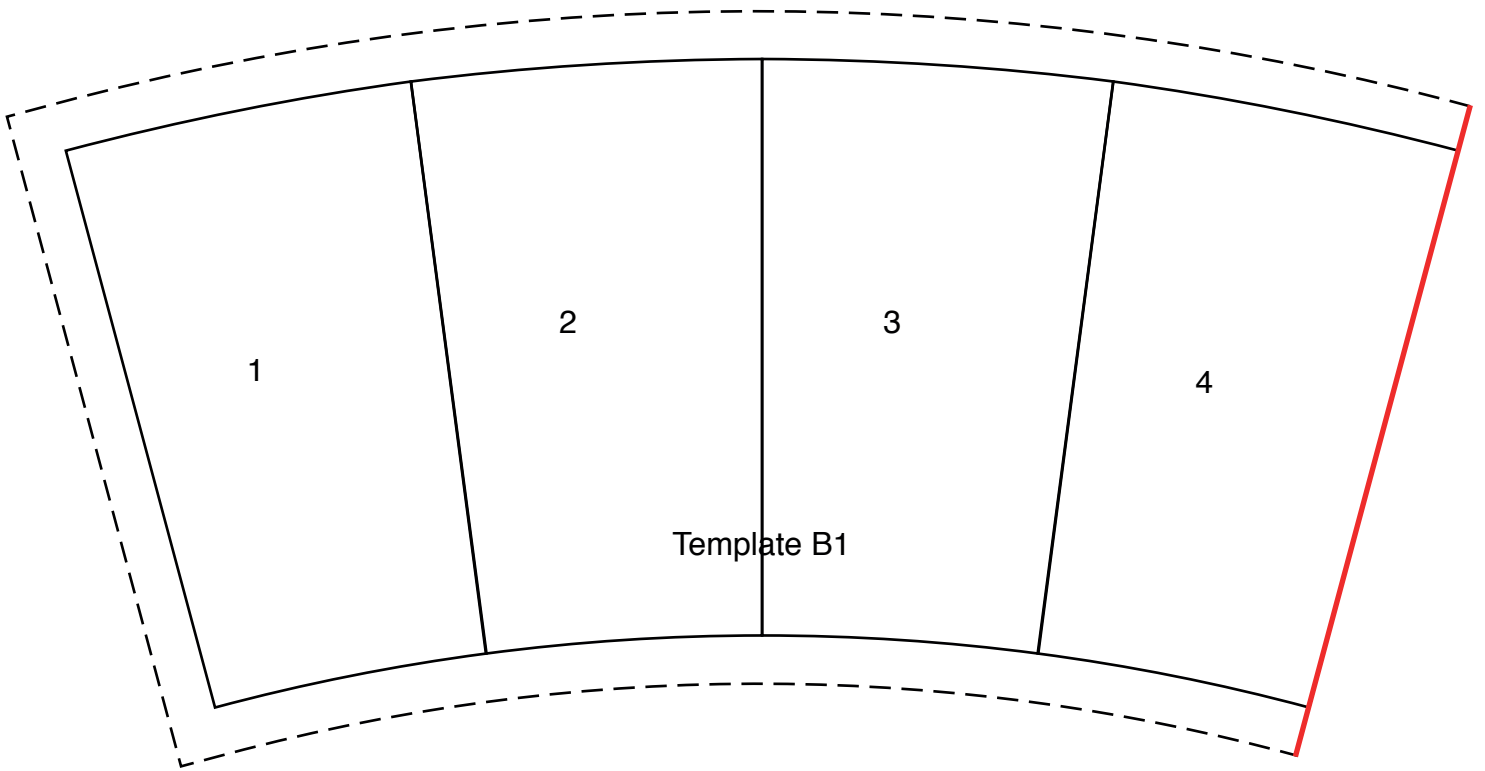




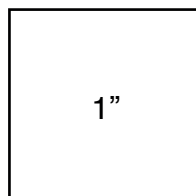
Templates must be printed at 100% or "no scaling". To ensure the templates are the correct size, measure the guide lines or inch square to make sure they have printed at the correct size.

Template A2

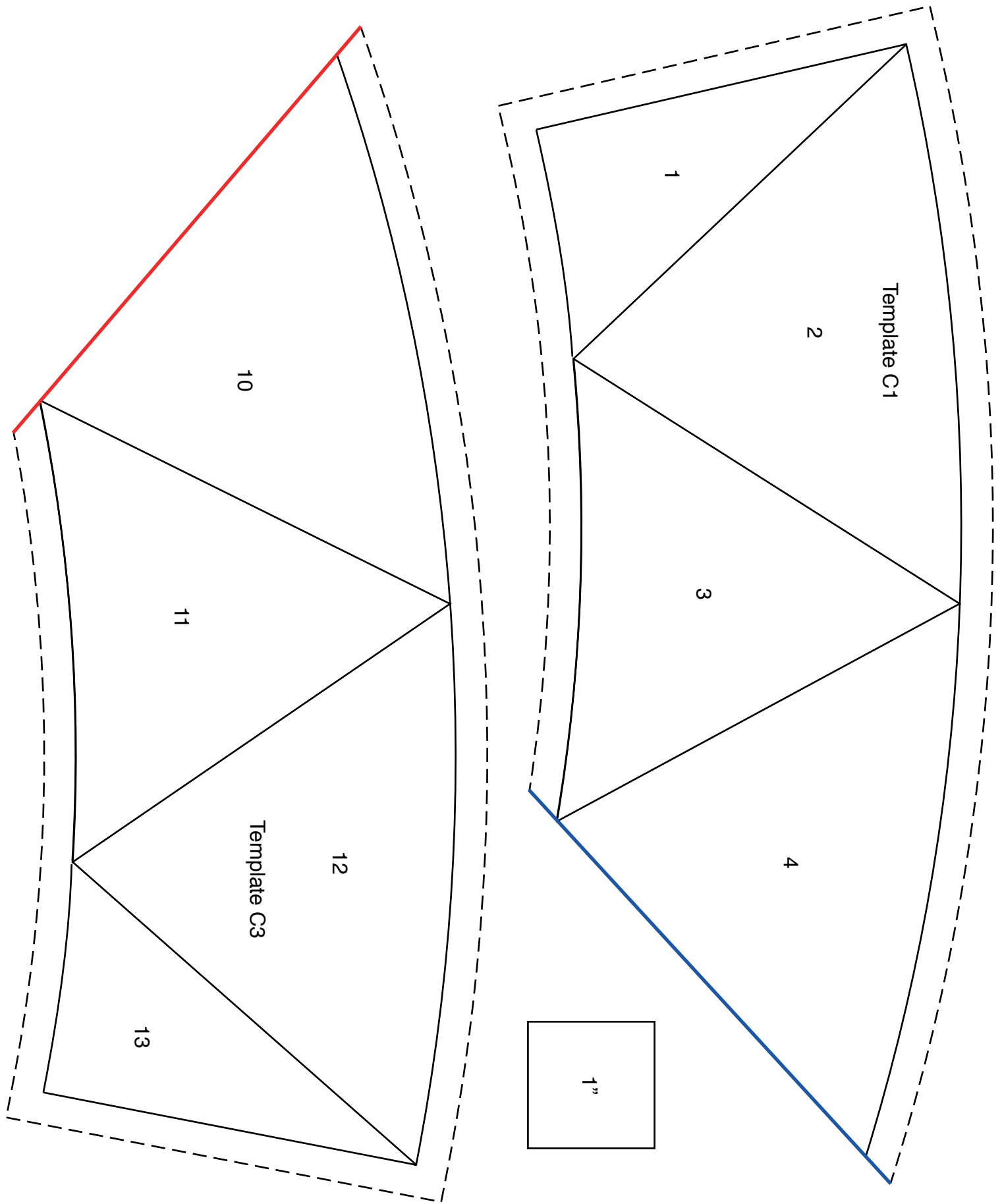




Templates must be printed at 100% or “no scaling”. To ensure the templates are the correct size, measure the guide lines or inch square to make sure they have printed at the correct size.

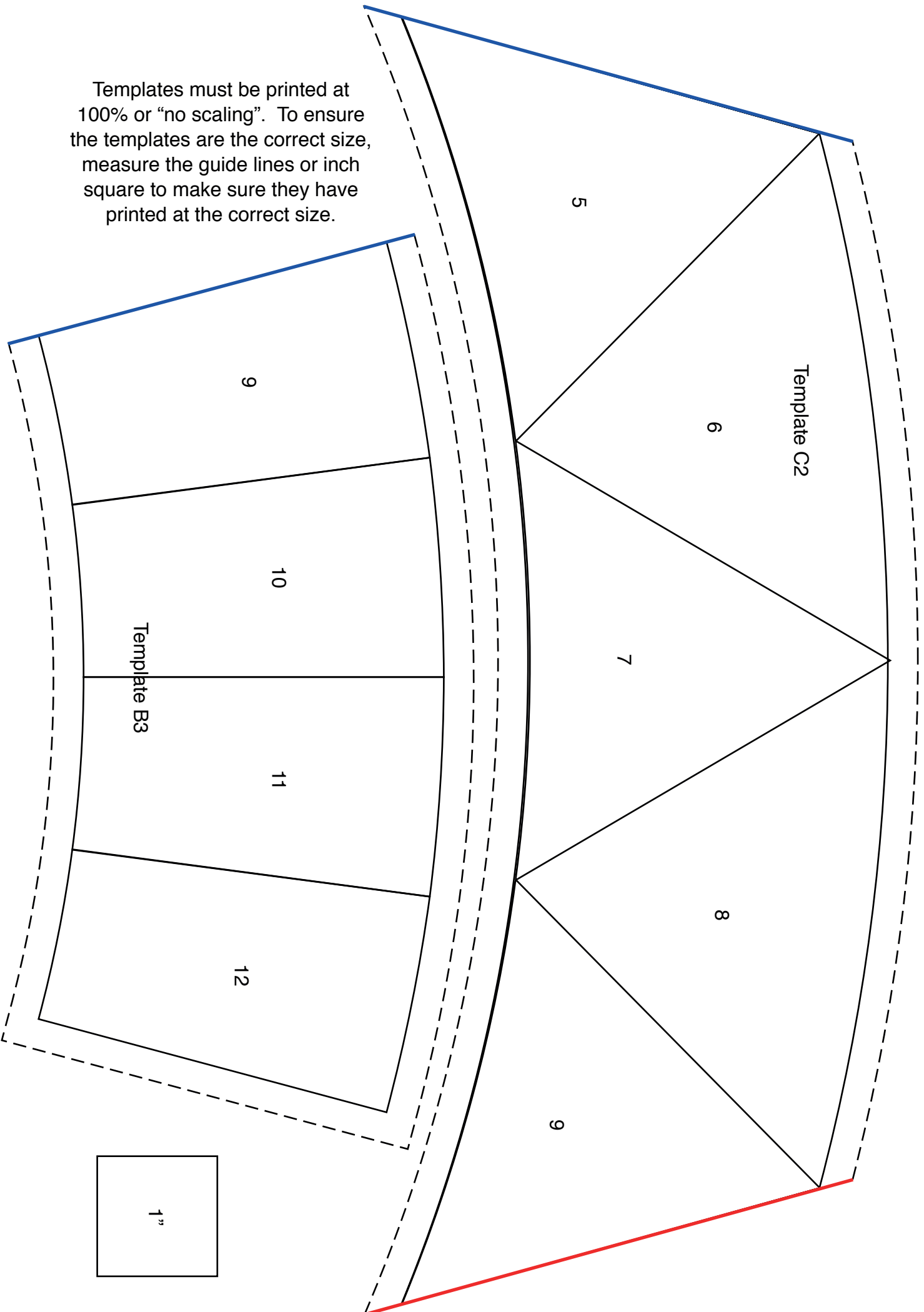




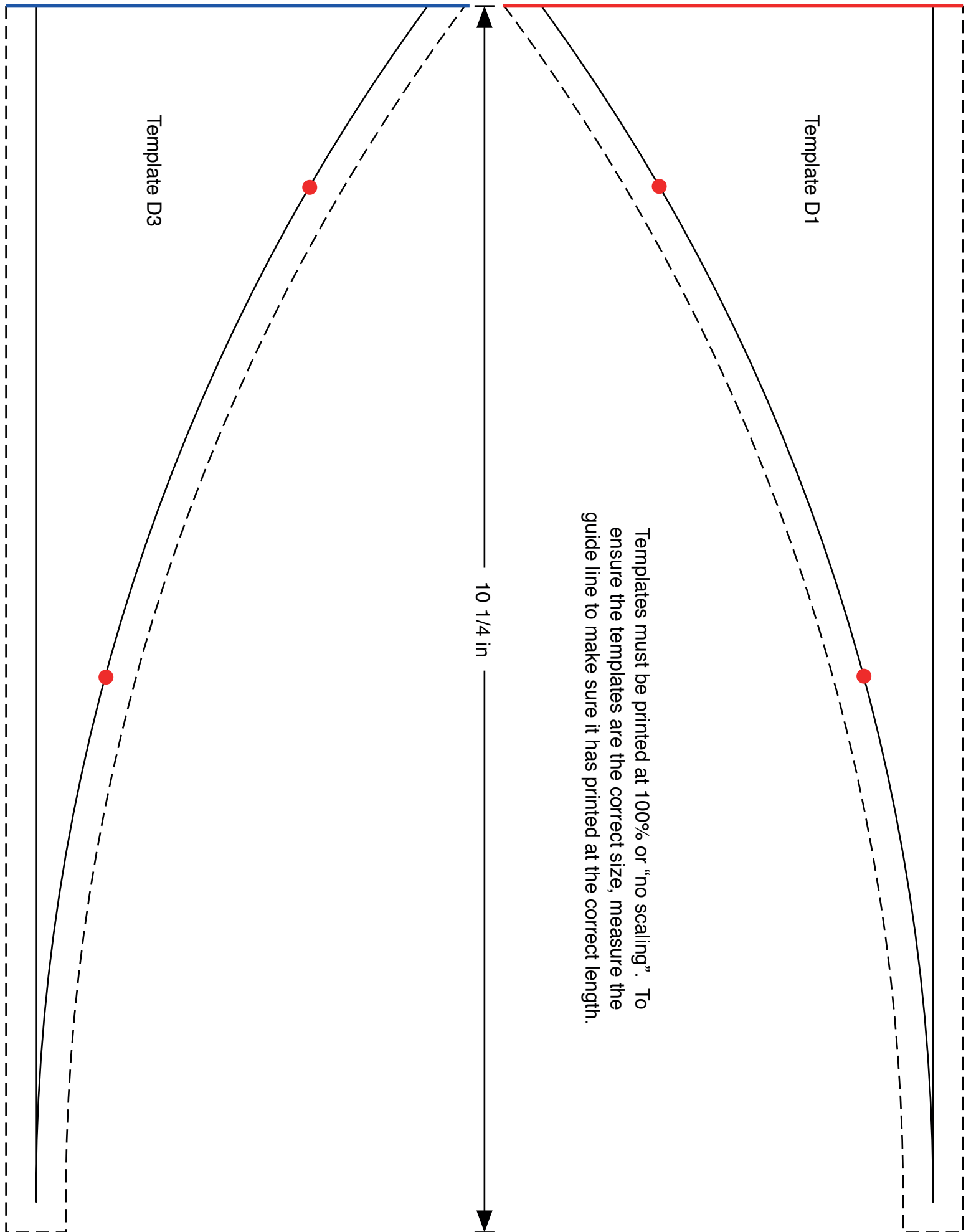


Templates must be printed at 100% or “no scaling”. To ensure the templates are the correct size, measure the guide lines or inch square to make sure they have printed at the correct size.

Templates must be printed at 100% or "no scaling". To ensure the templates are the correct size, measure the guide lines or inch square to make sure they have printed at the correct size.



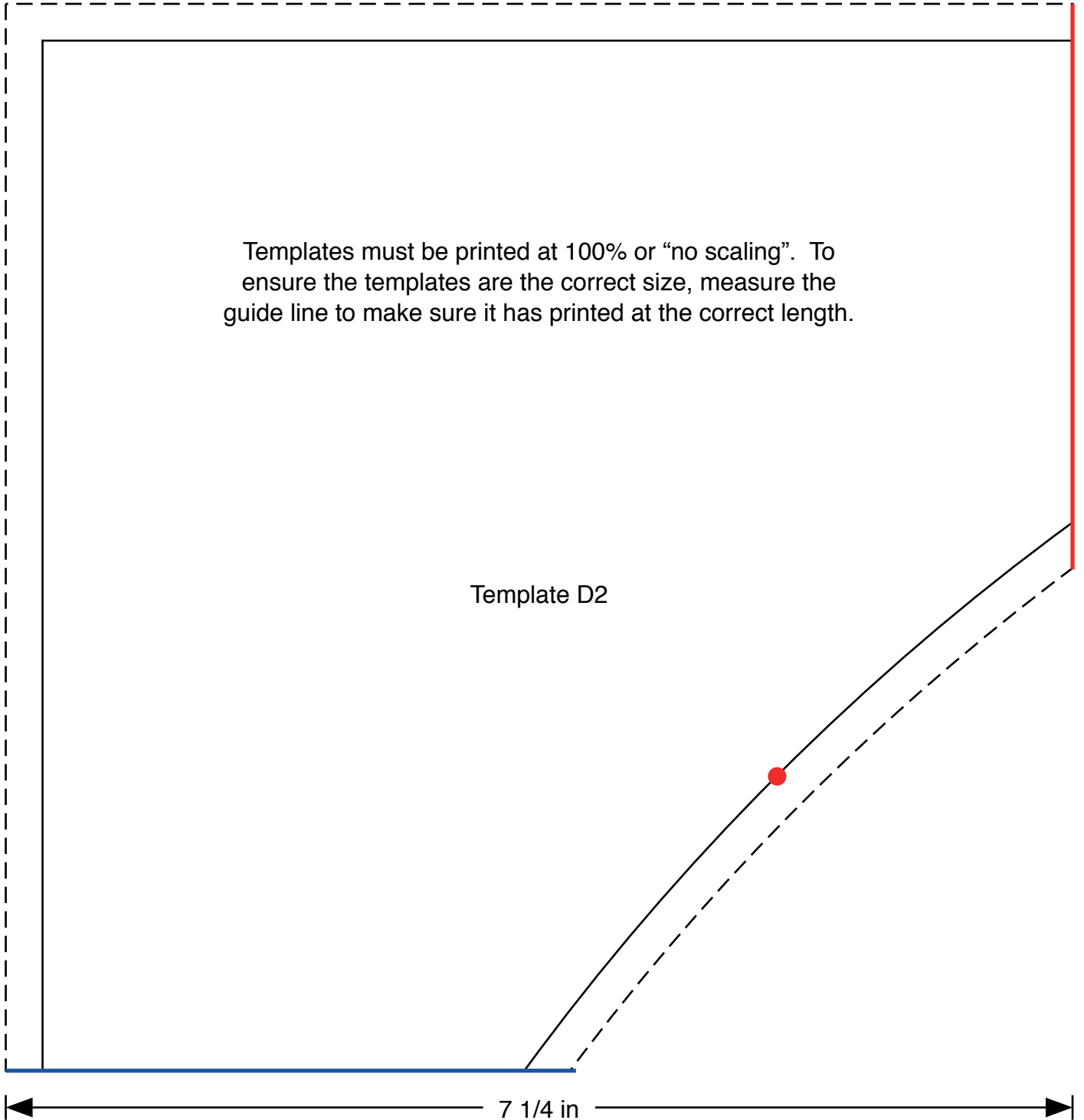


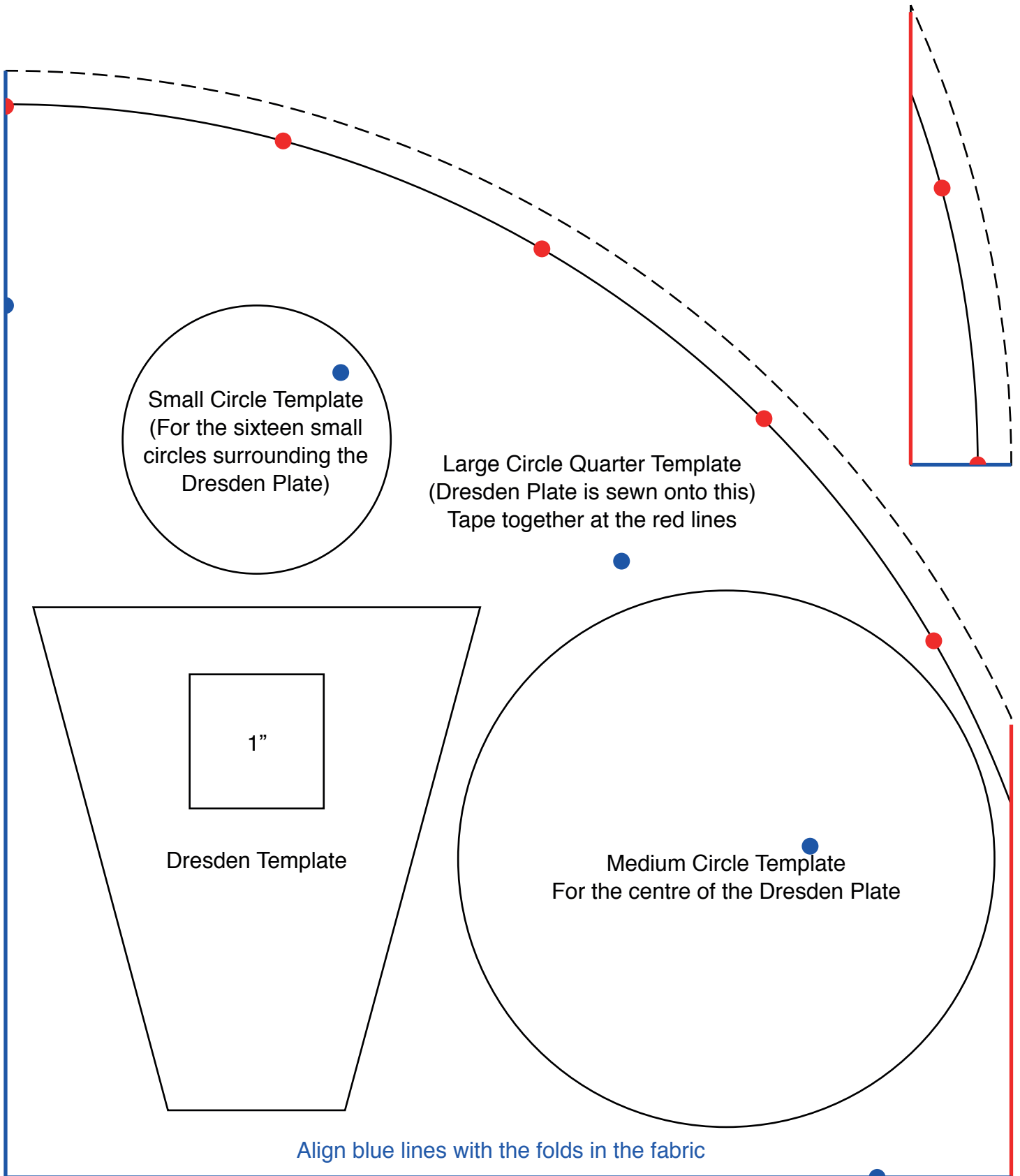


Templates must be printed at 100% or "no scaling". To ensure the templates are the correct size, measure the guide line to make sure it has printed at the correct length.

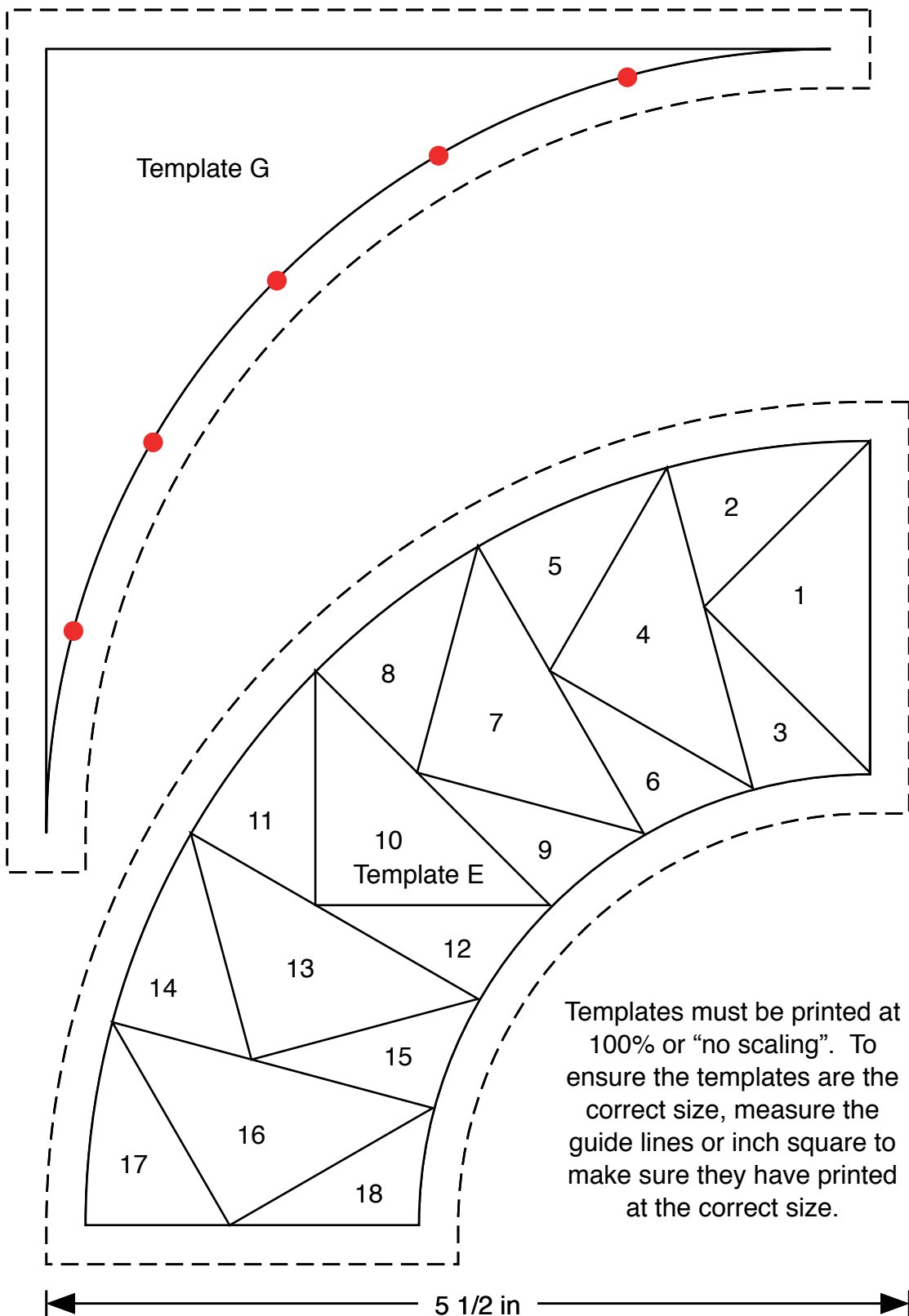
Templates must be printed at 100% or "no scaling". To ensure the templates are the correct size, measure the guide line to make sure it has printed at the correct length.

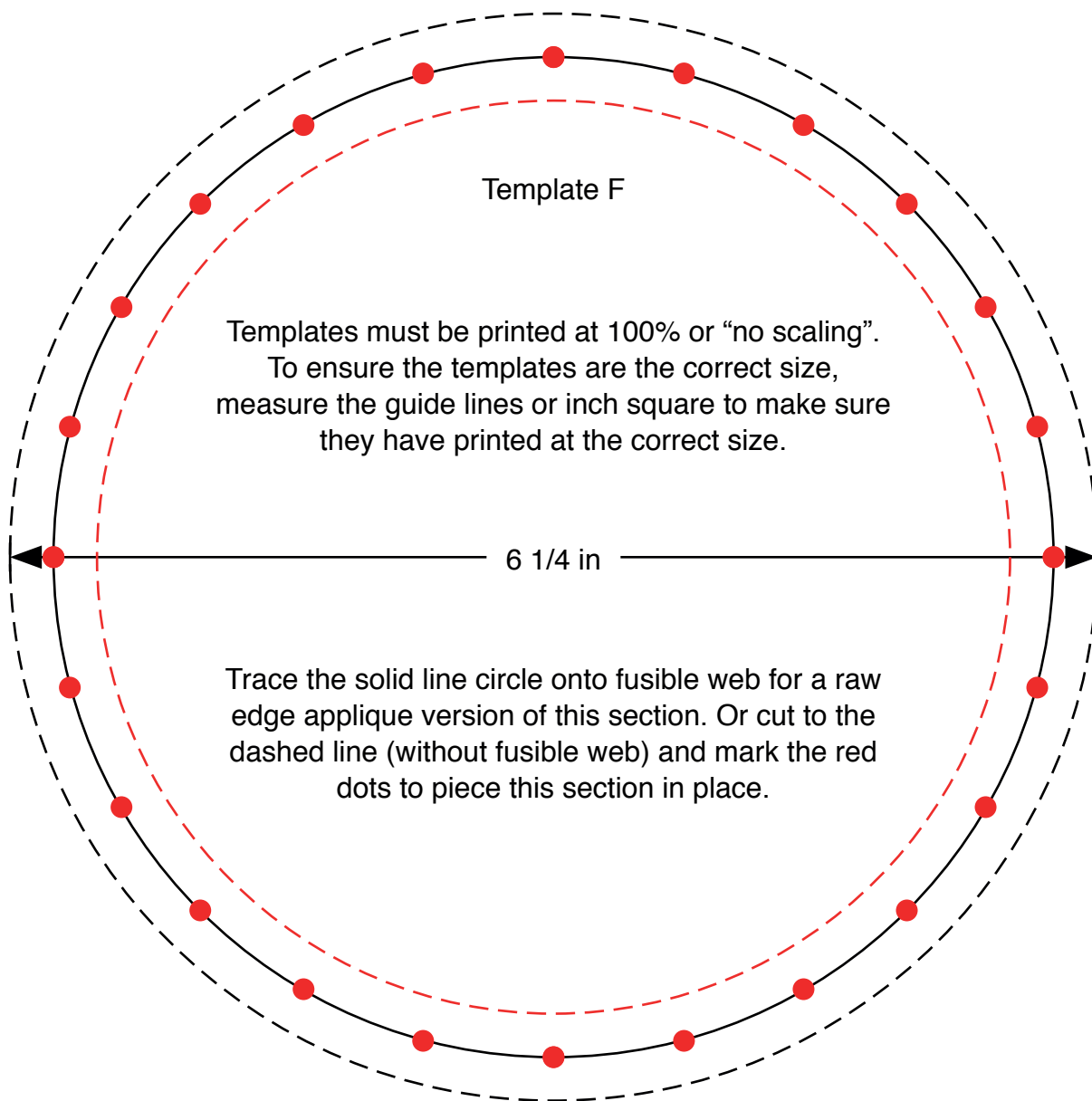
Template D2





Templates must be printed at 100% or "no scaling". To ensure the templates are the correct size, measure the guide lines or inch square to make sure they have printed at the correct size.



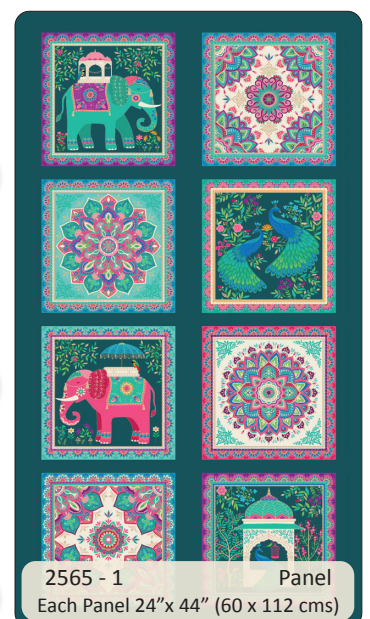
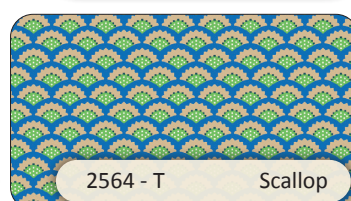
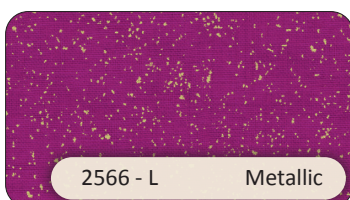
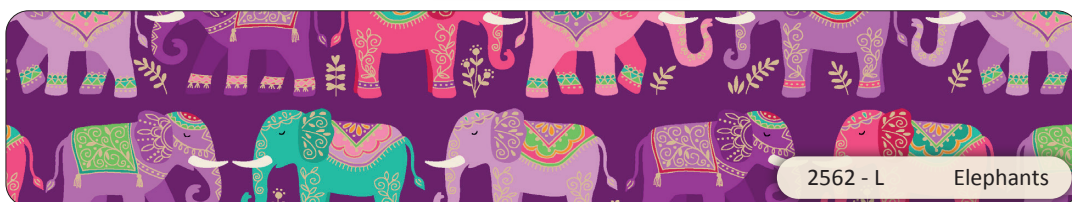
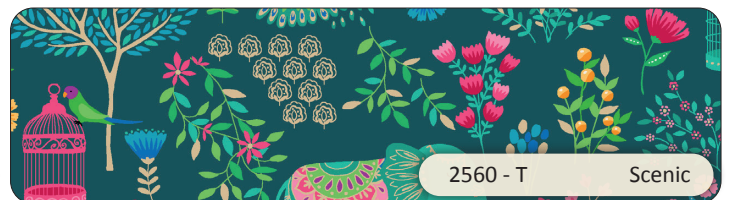
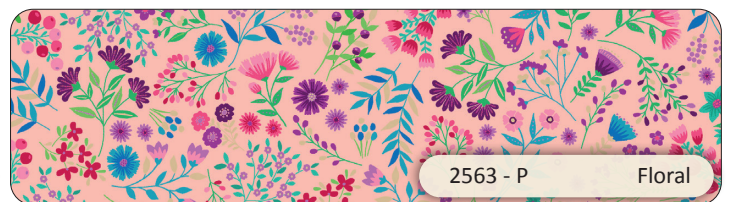
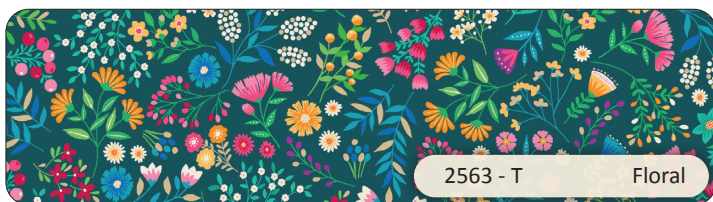
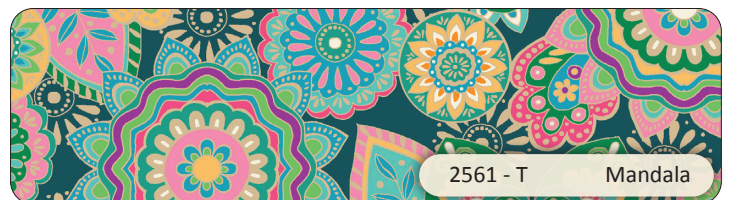




# Jaipur

A collection by **Makower UK**

16 Prints, 1 panel  
Delivery from April 2023



Images for reference only are not correct for scale (approx 50%) or actual colour

**makower uk**



[www.makoweruk.com](http://www.makoweruk.com)



[contact@makoweruk.com](mailto:contact@makoweruk.com)



+44(0)1628 509640

Unit 14, Cordwallis Business Park, Clivemont Road, Maidenhead, Berkshire SL6 7BU